

CHEMISTRY THAT MATTERS™



EXPRESSION 2021/2022

LNPT™ COPOLYMER COLOR TRENDS





EXPRESSION 2021 / 2022

As one of the top engineering plastics suppliers, SABIC keeps researching emerging color trends, and we help customers transfer design concept into tangible solutions, triggering new perception of retro and energy.

VISUALFX™ resins are formulated with the color and effect inherent in the pellet to create colorful and exceptionally rich looking parts out-of-mold in an eco-friendly way.

Let us take you on a fascinating journey through the world of aesthetics.

COLORXPRESS™ Services

deliver the right colors and effects, in the right place,
at the right time, every time.

TIME'S ECHO
IRIDESCENCE
SWEET NEON
MOMENT
RE-BLOSSOM
NATURAL THERAPIES





TIME'S ECHO

Fashion trends come and go. Right now, retro trends are making a huge comeback. The designer has combined the retro design style and geometric shapes in a way that inspires fun, breathes new life into classical elements and allows elegance to speak for itself.

The retro color palette characterized by medium brightness and high chroma induces a sense of nostalgia, making a link between the past and the present.

01

Theme 01

TIME'S ECHO



❖ Luster Plus

The Luster Plus series leverages new technologies to produce enhanced pearlescent delicateness and luminosity that is more vivid and resplendent than before. The play of light and shadow shifts and varies with surface curvature and material thickness.





Luster Plus

FXP1430
2G3B3022X
Delft Blue

- | | |
|---|--|
| ▪ Grade | EXL Copolymer
FXP1430: Excellent impact resistance |
| ▪ Potential Application | Housing of consumer electronics products
Cosmetic packaging
Automotive interior decoration trims, etc. |
| ▪ Coloring Space | Wide coloring space
Better pearly effect and higher reflection in translucent base |
| ▪ Welding Line / Flow Mark Sensitivity | Mid - high |

Luster Plus

FXP1430
2G7B3020X
Marina



Luster Plus

FXP1430
9G3B3026X
Provence





Luster Plus

FXP1430
4G6B3018X
Tulip

Luster Plus

FXP1430
6G7B3019X
Cinnabar

Luster Plus

FXP1430
4G7B3017X
Naples

- | | |
|---|--|
| ▪ Grade | EXL Copolymer
FXP1430: Excellent impact resistance |
| ▪ Potential Application | Housing of consumer electronics products
Cosmetic packaging
Automotive interior decoration trims, etc. |
| ▪ Coloring Space | Wide coloring space
Better pearly effect and higher reflection in translucent base |
| ▪ Welding Line / Flow Mark Sensitivity | Mid - high |





IRIDES- CENCE

New technology enables people to switch between virtual worlds, imagined worlds and reality at will.

This design delivers an experience of real world blending with real world by using ethereal rainbow colors and delicate luster to produce futuristic, dreamy and surreal visuals.

Theme 02

IRIDESCENCE



❖ Luster

Reproduce the elegance of a pearl finish with a shiny, translucent base in soft pastel and iridescent colors.





Luster

FXM1414T
6G7B1814M
Confetti



Luster

FXM1414T
9G4B1558M
Wisteria



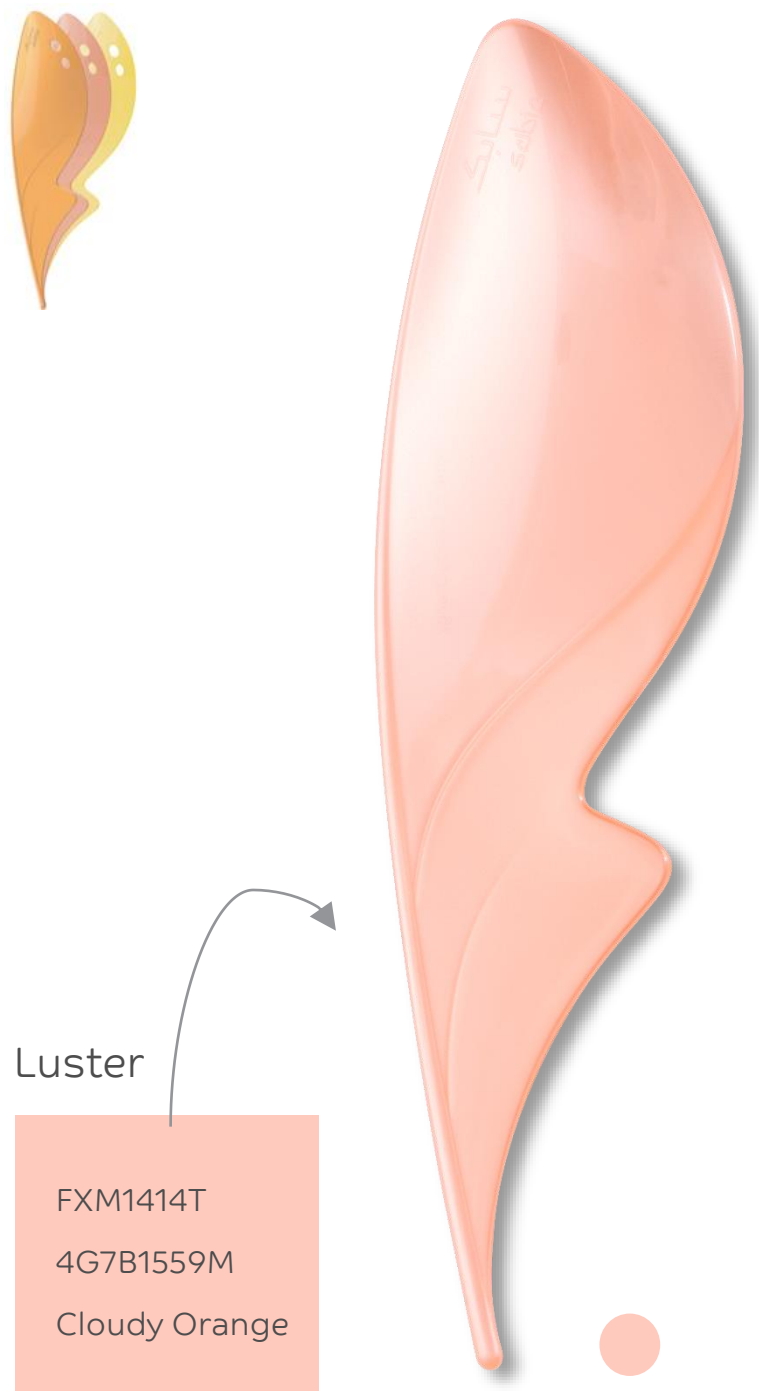
Luster

FXM1414T
2G7B1817M
Sky Mirror



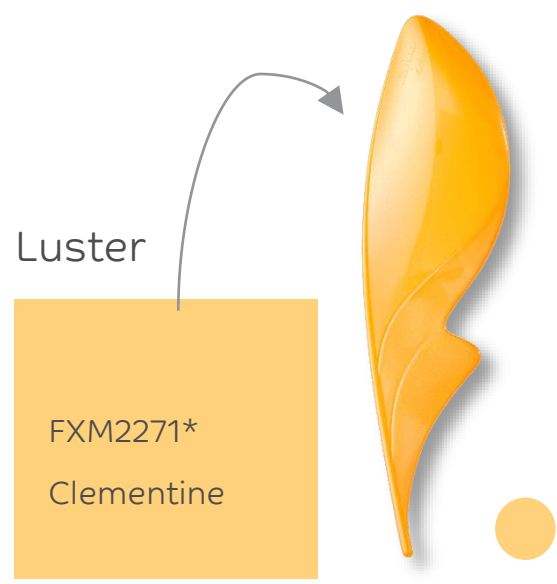
- | | |
|---|--|
| ■ Grade | FXM941A: FR UL94 V0 @3mm
EXL Copolymer FXM1414T: Excellent impact resistance
SLX Copolymer FXM2271*: Impact resistant, low scratch |
| ■ Potential Application | Housing of consumer electronics products
Cosmetic packaging
Automotive interior decoration trims, etc. |
| ■ Coloring Space | Wide coloring space |
| ■ Welding Line / Flow Mark Sensitivity | Mid - high |

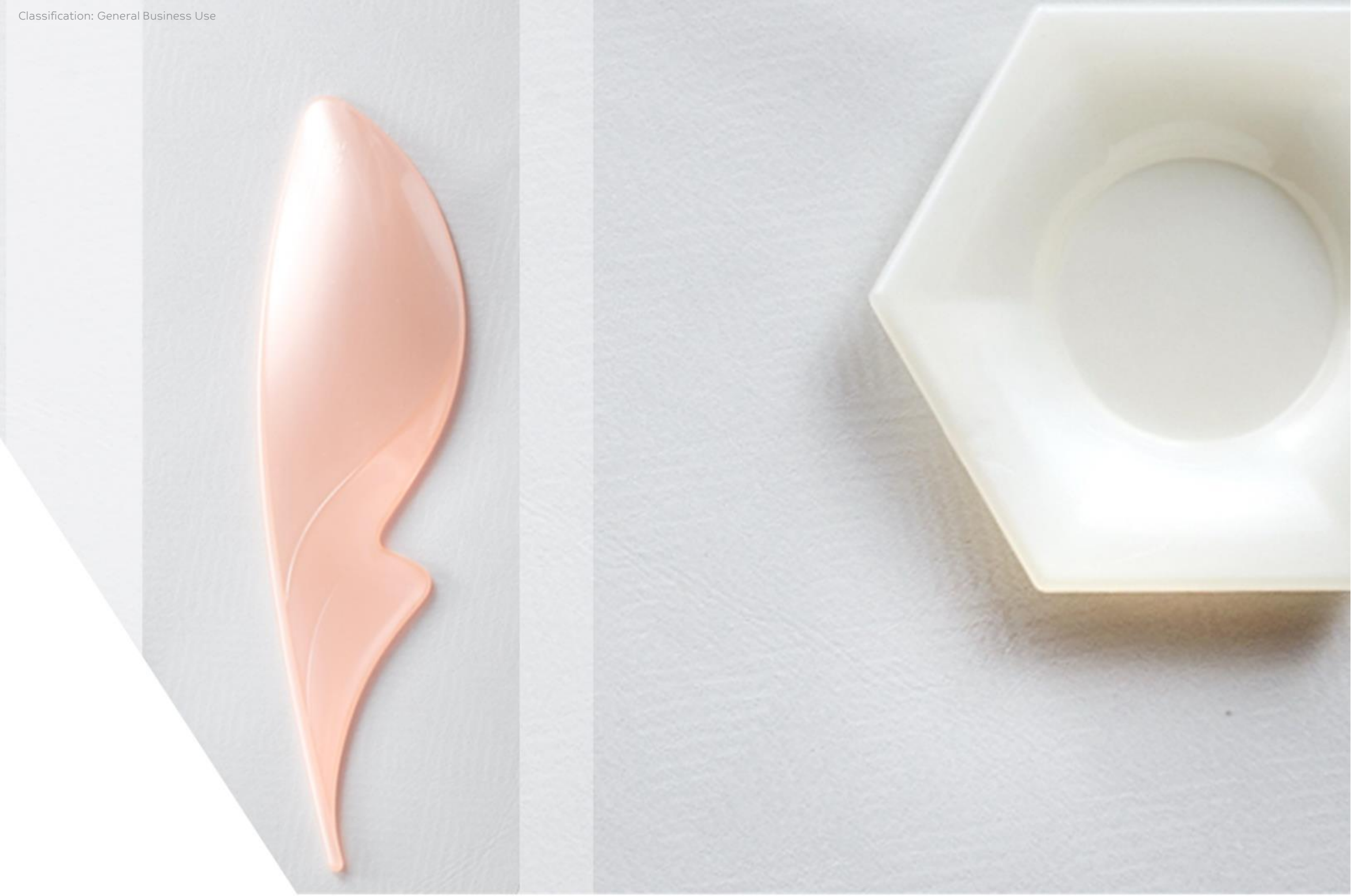
* Metallic effect and pearly effect in FXM2271 are in developmental stage



■ Grade	FXM941A: FR UL94 V0 @3mm EXL Copolymer FXM1414T: Excellent impact resistance SLX Copolymer FXM2271*: Impact resistant, low scratch
■ Potential Application	Housing of consumer electronics products Cosmetic packaging Automotive interior decoration trims, etc.
■ Coloring Space	Wide coloring space
■ Welding Line / Flow Mark Sensitivity	Mid - high

* Metallic effect and pearly effect in FXM2271 are in developmental stage







SWEET NEON

Digital technology can help product design stand out on screens and in the real world. People use digital technology to simulate natural forms and create new forms of interactive art.

The fluorescent neon color palette is used to create energetic and colorful flow lines, injecting excitement into the design and connect with young people.

03

Theme 03

SWEET NEON



❖ Illuminate / Edge Glow

Transform invisible light to create a brilliant edge glow effect accenting design and simulating an interior light source.

❖ Diffusion

Combine transparency, diffusion and eye-catching colors for both hidden and visible interior components.

❖ Diamond

Glass-like particles in a translucent base create a shimmering, jewel effect that helps make any product shine.





Illuminate
Edge Glow

FXE1414T
6G6B1475T
Pitaya



Illuminate
Edge Glow

FXE1414T
6G6B1551T
Noontide



Illuminate/
Edge Glow
+
Light Diffusion

DMX1435D
3G7B1690X
Firefly

- | | |
|---|---|
| ■ Grade | FXE121(R) / FXE141R: Excellent impact resistance

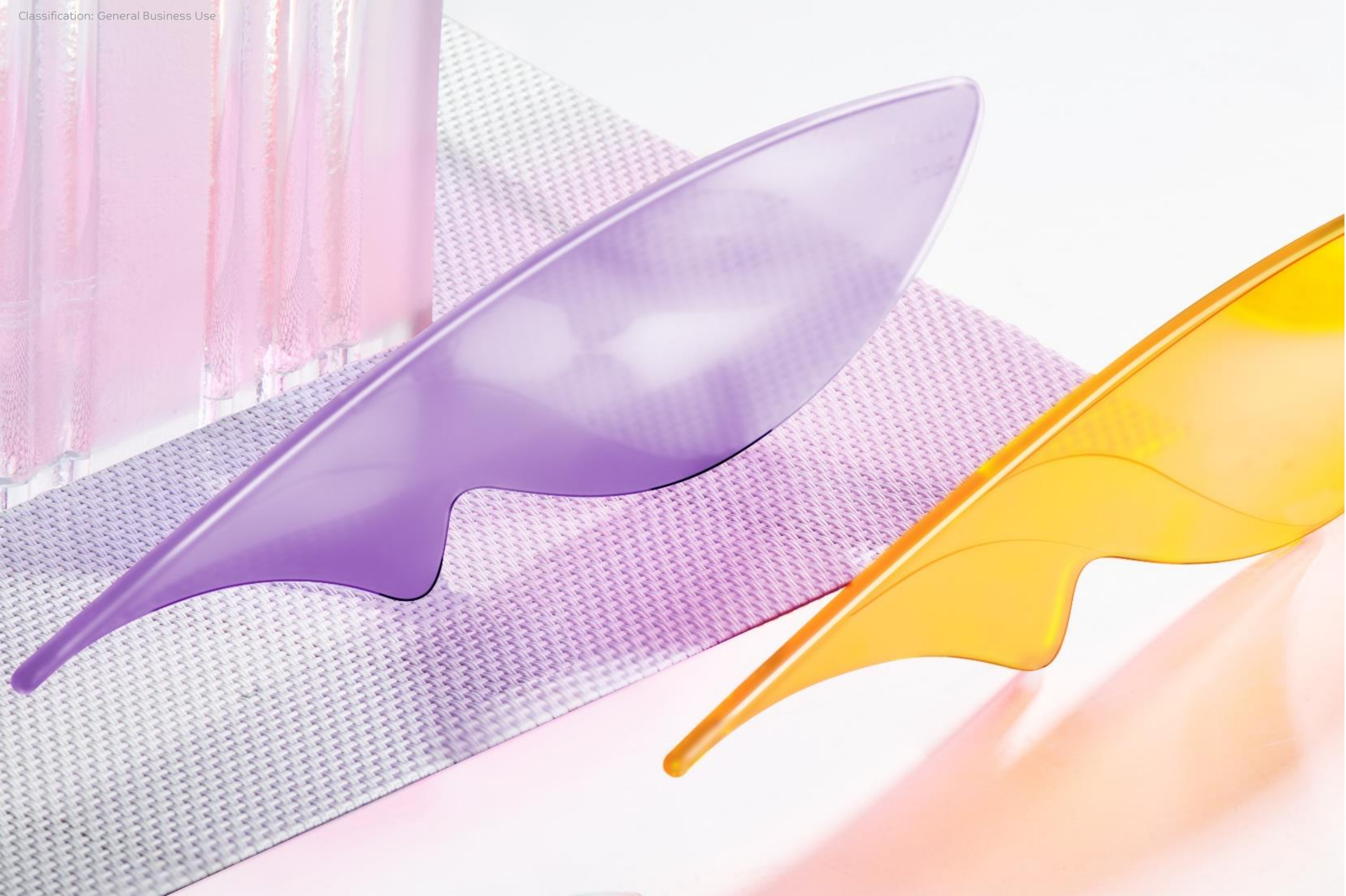
EXL Copolymer FXE1414 / FXEMPX1 / FXEMPX2 / FXE1112T / FXE1414T
Excellent impact resistance at low temperature |
| ■ Potential Application | Decoration of consumer electronics products
Cosmetic packaging
Automotive interior decoration trims, etc. |
| ■ Coloring Space | FXE121(R) / FXE141R: Transparent / translucent / opaque
FXE1414 / FXEMPX1 / FXEMPX2: Opaque
FXE1112T / FXE1414T: Transparent / translucent / opaque |
| ■ Welding Line / Flow Mark Sensitivity | Low |





▪ Grade	FXD123R: Excellent impact resistance and UV stability FXD1414T: Excellent impact resistance at low temperature FXD9810: FR UL94 V0 @1.2mm, excellent impact resistance DMX1435D: Anti-scratch and light diffusion
▪ Potential Application	Housing or decoration of consumer electronics products Lighting Automotive interior decoration trims, etc.
▪ Coloring Space	Wide coloring space ranging from subtle to dramatic diffusing effect
▪ Welding Line / Flow Mark Sensitivity	Low







■ Grade	FXG121R: Good impact resistance FXG1414T: Excellent impact resistance DMX1435G / DMX1234G*: Anti-scratch
■ Potential Application	Housing or decoration of consumer electronics products Automotive interior lighting Cosmetic packaging, etc.
■ Coloring Space	Wide coloring space ranging from subtle to dramatic diffusing effect
■ Welding Line / Flow Mark Sensitivity	Low

* Diamond effect in DMX1435G and DMX1234G are in developmental stage





MOMENT

Social media platforms are becoming increasingly popular, which sparks off the pursuit of real/natural images which are filter-free. People still love classics and tangible experience of beauty.

The combination of classic structures, lines and luster evokes feelings of calmness in viewers' hearts. Saturated metallic hues accentuate the attractiveness of the product. Rich and dark colors give off nostalgic vibes. The light hues from metallic texture blends complement colors creating a gentler contrast between the two.

04

Theme 04

MOMENT



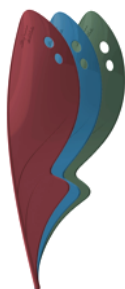
❖ Ares

Extremely small flakes create the appearance of a continuous metal surface without the added cost of paint.

❖ Sparkle

A beautiful metal flake painted look which can eliminate the need for paint.





Sparkle

FXM1414T
2G3B1470M
Lapis Lazuli



- | | |
|---|---|
| ■ Grade | FXC630SK: FR PC/ABS
FXM941A: FR PC UL94 V0 @3.0mm; FXM121R: Non-FR PC
EXL Copolymer FXM1414T: Excellent impact resistance
SLX Copolymer FXM2271*: Impact resistant, anti-scratch |
| ■ Potential Application | Housing or decoration of consumer electronics products
Automotive interior lighting
Cosmetic packaging, etc. |
| ■ Coloring Space | Mid-high chroma |
| ■ Welding Line / Flow Mark Sensitivity | Mid - high |

* Metallic effect and pearly effect in FXM2271 are in developmental stage

Ares

FXM1414T
6G3B1840M
Vineyard Wine



Ares

FXM1414T
3G3B1561M
Lichen





Sparkle

FXM2271
Pale Lavender



Grade	FXC630SK: FR PC/ABS FXM941A: FR PC UL94 V0 @3.0mm; FXM121R: Non-FR PC EXL Copolymer FXM1414T: Excellent impact resistance SLX Copolymer FXM2271*: Impact resistant, anti-scratch
Potential Application	Housing or decoration of consumer electronics products Automotive interior lighting Cosmetic packaging, etc.
Coloring Space	Mid-high chroma
Welding Line / Flow Mark Sensitivity	Mid - high

* Metallic effect and pearly effect in FXM2271 are in developmental stage

Sparkle

FXM2271
Mercury



Sparkle

FXM2271
Sand







RE- BLOSSOM

The pandemic and global political power shift have led to drastic changes in people's values across the world. Efforts have been made to reduce harmful impact of the pursuit of luxury. People are paying more attention to environmental protection, resource conservation, mind-body balance, as well as work-life balance. More and more people want to change the world for the better in a gentle way.

In the era of personalization, the medium bright, high chroma color palette is used in the design of eco-friendly products to convey joyfulness and friendliness.

05

Theme 05

RE-BLOSSOM



❖ PCR PC/ABS

Impact modified polycarbonate / acrylonitrile butadiene styrene (PC/ABS) blend containing post-consumer recycled (PCR) contents, which is also non-brominated and non-chlorinated flame retardant (FR).

❖ PCR High Modulus PC

Compound based on PCR polycarbonate resins which are flame retardant and contain glass fiber.

❖ Upcycling iQ PBT

iQ PBT based compound utilizes LNP™ ELCRIN™ iQ upcycling technology.





PCR
PC + GF

D251RCC
9G3B1683
Nocturnes



PCR High Modulus PC

Compound based on PCR polycarbonate resins which are flame retardant and contain glass fiber.

- **Grade**
D251RCC: PC+20%GF, FR UL94 V0 0.6mm, ~40%PCR
D351RCC: PC+30%GF, FR UL94 V0 0.8mm, ~40%PC
- **Potential Application** Housing of home appliance and consumer electronics products, etc.
- **Coloring Space** Wide coloring space, opaque

PCR
PC + GF

D251RCC
2G3B1681
Blue Yonda



PCR
PC + GF

D251RCC
4G4B1684
Waratah





PCR
PC/ABS

RCX7243
3G5B2560
Cypress Green



PCR PC/ABS

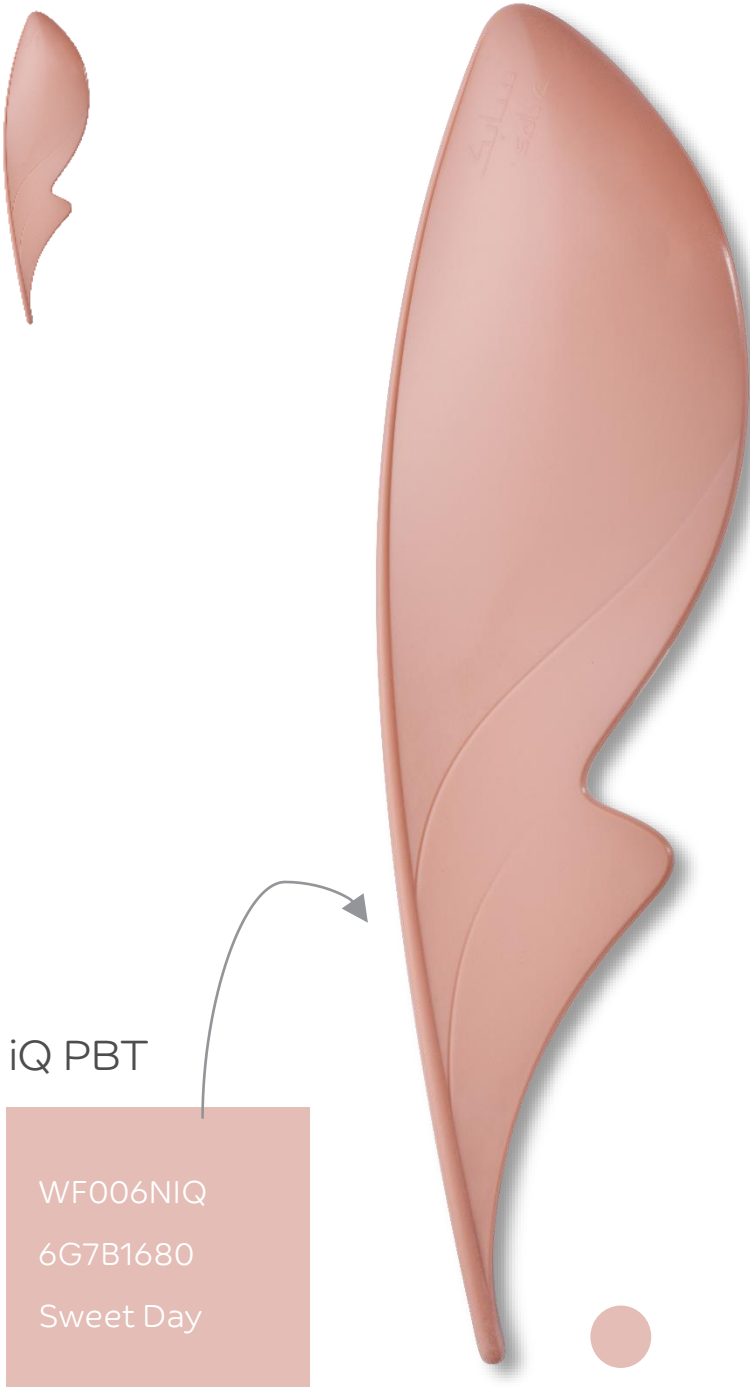
Impact modified polycarbonate / acrylonitrile butadiene styrene (PC/ABS) blend containing post-consumer recycled (PCR) contents, which is also non-brominated and non-chlorinated flame retardant (FR).

- **Grade** RCX7243: PC/ABS, FR UL94 V0 0.75mm, ~30%PCR
- **Potential Application** Housing of home appliance and consumer electronics products, etc.
- **Coloring Space** Wide coloring space, opaque

PCR
PC/ABS

RCX7243
4G4B2559
Jojoba





Upcycling iQ PBT

iQ PBT based compound utilizes LNP™ ELCRIN™ iQ upcycling technology.

- | | |
|--------------------------------|---|
| ▪ Grade | WF006NIQ: 30%GF PBT, >25% PCR, high metal bonding strength
W1000XiQ: PBT, good chemical resistance, >57% PCR |
| ▪ Potential Application | Smart phone / tablet antenna splitter
Cosmetic packaging, etc. |
| ▪ Coloring Space | Wide coloring space, opaque |





NATURAL THERAPIES

Nature has a healing power. This design makes people forget the coldness of the hi-tech style. It draws inspiration from nature and leverages technology in a smart way to benefit both mankind and nature. The purity and simplicity of the design deliver a relaxing and refreshing experience.

Designers use natural, recyclable and eco-friendly materials and pure colors in an artistic way to convey the idea that technology is reshaping the human relation with nature.

06

Theme 06

NATURAL THERAPIES



❖ PCR EXL Copolymer

PC/siloxane copolymer resin with excellent impact and post-consumer recycled content.





PCR
EXL PC

EXL8483RCC
3G8B1167
Mimosa



- Grade**
EXL8423RCC: ~20%PCR
EXL8543RCC: ~40%PCR
EXL8483RCC: ~80%PCR
EXL8332TCC: ~25%PCR, Excellent low temperature impact resistance
- Potential Application**
Housing of consumer electronics product and electrical products
Home appliance products, etc.
- Coloring Space**
EXL8423RCC / EXL8543RCC / EXL8483RCC: Wide, opaque
EXL8332TCC: Wide, transparent, translucent, opaque
- Welding Line / Flow Mark Sensitivity** Low

PCR
EXL PC

EXL8483RCC
2G8B1296
Ice Dancer



PCR
EXL PC

EXL8483RCC
2G3B1808
Silent Navy





PCR
EXL PC

EXL8483RCC
6G8B1812
Rosebud



- Grade**
EXL8423RCC: ~20%PCR
EXL8543RCC: ~40%PCR
EXL8483RCC: ~80%PCR
EXL8332TCC: ~25%PCR, Excellent low temperature impact resistance
- Potential Application**
Housing of consumer electronics product and electrical products
Home appliance products, etc.
- Coloring Space**
EXL8423RCC / EXL8543RCC / EXL8483RCC: Wide, opaque
EXL8332TCC: Wide, transparent, translucent, opaque
- Welding Line / Flow Mark Sensitivity** Low

PCR
EXL PC

EXL8483RCC
4G8B1686
Water Lily



PCR
EXL PC

EXL8332TCC
1N8A8674T
Pristine







CUSTOMER INNOVATION CENTER COLORXPRESS

We deliver the right colors and effects,
in the right place, at the right time, every time.

[Contact Us](#)

EUROPE
Customer Innovation Center Europe
Plasticslaan 1
4612 PX Bergen op Zoom
The Netherlands
T +31-164-29-39-27
E colorxpress.europe@sabic-ip.com

AMERICAS
ColorXpress Services
One ColorXpress Way
Selkirk, NY 12158 , US
T +1-877-43COLOR (1-877-432-6567)
E colorxpress@sabic-ip.com

ASIA PACIFIC
Customer Innovation Center
2550 Xiupu Rd. Pudong,
Shanghai 201319, China
T +86-21-2037-8086
E colorxpress.pacific@sabic-ip.com

THE MATERIALS, PRODUCTS AND SERVICES OF SABIC OR ITS SUBSIDIARIES OR AFFILIATES (“SELLER”) ARE SOLD SUBJECT TO SELLER’S STANDARD CONDITIONS OF SALE, WHICH ARE AVAILABLE UPON REQUEST. INFORMATION AND RECOMMENDATIONS CONTAINED IN THIS DOCUMENT ARE GIVEN IN GOOD FAITH. HOWEVER, SELLER MAKES NO EXPRESS OR IMPLIED REPRESENTATION, WARRANTY OR GUARANTEE (I) THAT ANY RESULTS DESCRIBED IN THIS DOCUMENT WILL BE OBTAINED UNDER END-USE CONDITIONS, OR (II) AS TO THE EFFECTIVENESS OR SAFETY OF ANY DESIGN OR APPLICATION INCORPORATING SELLER’S MATERIALS, PRODUCTS, SERVICES OR RECOMMENDATIONS. UNLESS OTHERWISE PROVIDED IN SELLER’S STANDARD CONDITIONS OF SALE, SELLER SHALL NOT BE RESPONSIBLE FOR ANY LOSS RESULTING FROM ANY USE OF ITS MATERIALS, PRODUCTS, SERVICES OR RECOMMENDATIONS DESCRIBED IN THIS DOCUMENT. Each user is responsible for making its own determination as to the suitability of Seller’s materials, products, services or recommendations for the user’s particular use through appropriate end-use and other testing and analysis. Nothing in any document or oral statement shall be deemed to alter or waive any provision of Seller’s Standard Conditions of Sale or this Disclaimer, unless it is specifically agreed to in a writing signed by Seller. Statements by Seller concerning a possible use of any material, product, service or design do not, are not intended to, and should not be construed to grant any license under any patent or other intellectual property right of Seller or as a recommendation for the use of any material, product, service or design in a manner that infringes any patent or other intellectual property right.

SABIC and brands marked with TM are trademarks of SABIC or its subsidiaries or affiliates, unless otherwise noted.
© 2021 Saudi Basic Industries Corporation (SABIC). All Rights Reserved.

Any brands, products or services of other companies referenced in this document are the trademarks, service marks and/or trade names of their respective holders.



THANK YOU